

A pencil-drawn map of Southeast Asia, showing the outlines of Thailand, Cambodia, Laos, and Vietnam. The map is rendered in a sketchy, hand-drawn style. Overlaid on the map is the text 'SCENE 1' in a large, bold, white sans-serif font, and 'HAM RONG' in a smaller, white sans-serif font below it. The map includes labels for 'THAILAND', 'CAMBODIA', 'Laos', 'Saigon', and 'Da Nang'. There are two black dots on the map, one near Da Nang and one near Saigon. The background of the map is filled with light pencil shading and some wavy lines representing water or terrain.

SCENE 1

HAM RONG

THAILAND

CAMBODIA

Da Nang

Saigon

SCREEN

Map of Vietnam in 1965 from Saigon to Hanoi, including Danang, Hue, DMZ, 17th parallel, Vinh, Thanh Hoa + Thailand, Cambodia, Laos and China borders + Gulf of Tonkin and railway north to south. Icons of North Vietnamese flag (Hanoi), South Vietnamese and US flag (Saigon).



SHOT
Extreme long

CAMERA
Sliding and zooming from South to North

SOUND
Voice off:
Vietnam, March 2, 1965, USA launched Operation Rolling Thunder, the bombing campaign of transportation network in North Vietnam.

SCREEN Focus on North Vietnam:
Vinh, Thanh Hoa,
Ham Rong bridge,
Hanoi + Gulf of Tonkin
and railway.
We see on the map
the icon of the bridge.



SHOT
Medium

CAMERA
Sliding and zooming
on Thanh Hoa
and Ham Rong bridge

SOUND
Voice off:
The decision was to interdict rail system including Ham Rong bridge
situated 5 km northeast of Thanh Hoa city.

SCREEN

Dissolve. The map becomes the landscape of Thanh Hoa with the sea on east side. Using bird's viewpoint, we dive through clouds. Mountains, sea, estuary and Ma river appear.



SHOT
Extreme long

CAMERA
Top-down, zooming

SOUND
Voice-off:
Ham Rong or Dragon's Jaw is the land of Vietnamese dynasties, its scenery inspired poets since the 15th century.

SCREEN



SHOT

CAMERA

SOUND

SCREEN
Dissolve.
Dominating the chain
of mountains
and Ma River,
we follow
the hazy valley.

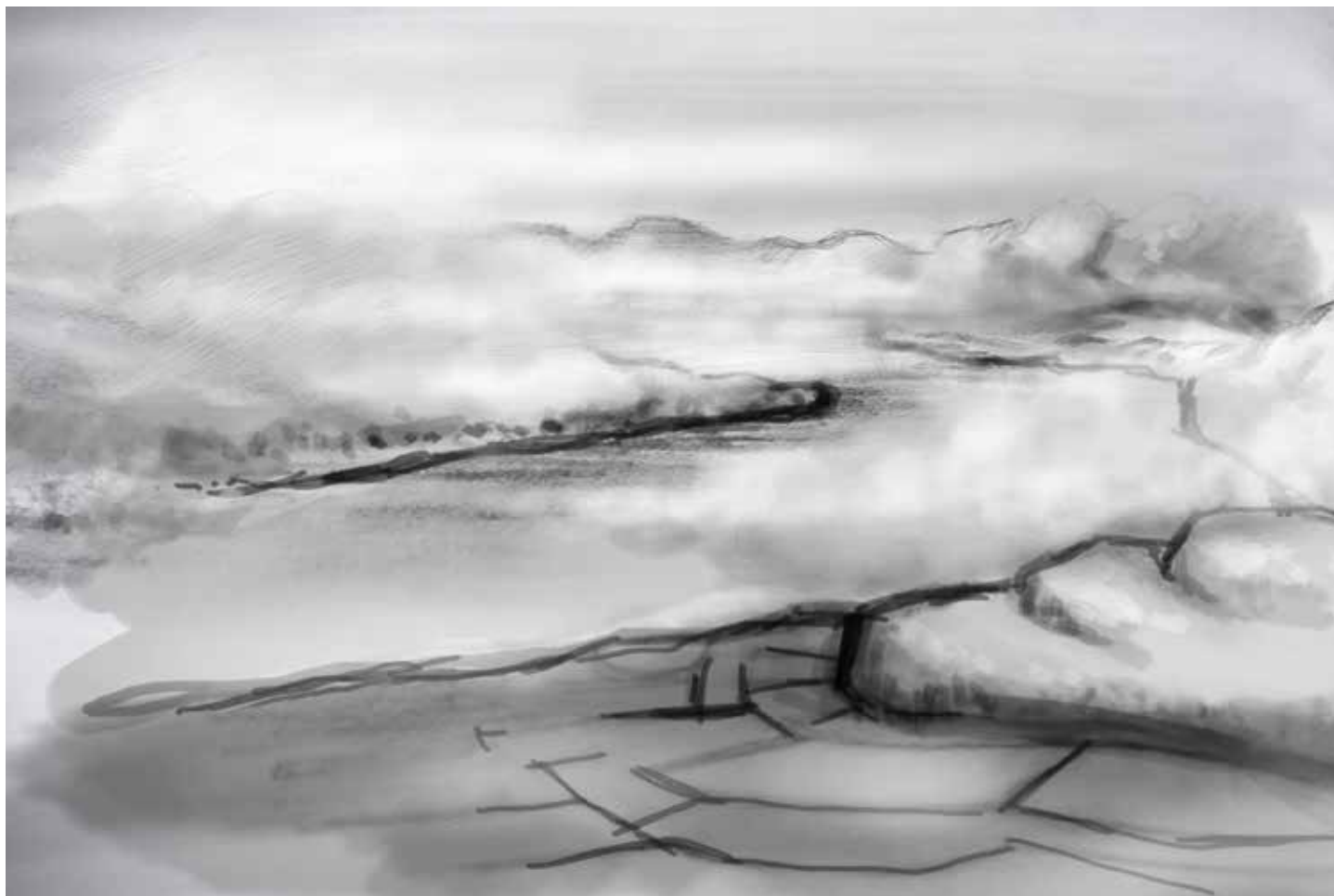


SHOT
Long

CAMERA
Top-down, zooming

SOUND
Voice-off:
"According to the legend, the chain of mountains appears in the shape
of a dragon, and the Ma river that runs across forms its opened jaw."

SCREEN Dissolve. Following Ma river, we see some barges as well a rice fields, farmers and buffalos on both sides of the river bank. Going forward, a thick haze obstructs the view. Going out of the haze, the shape of the bridge appears in the background, we finally arrive and stop smoothly at Ham Rong bridge, mysteriously wrapped in mist. There is natural life: birds flying under the bridge, fishermen on their sampan.

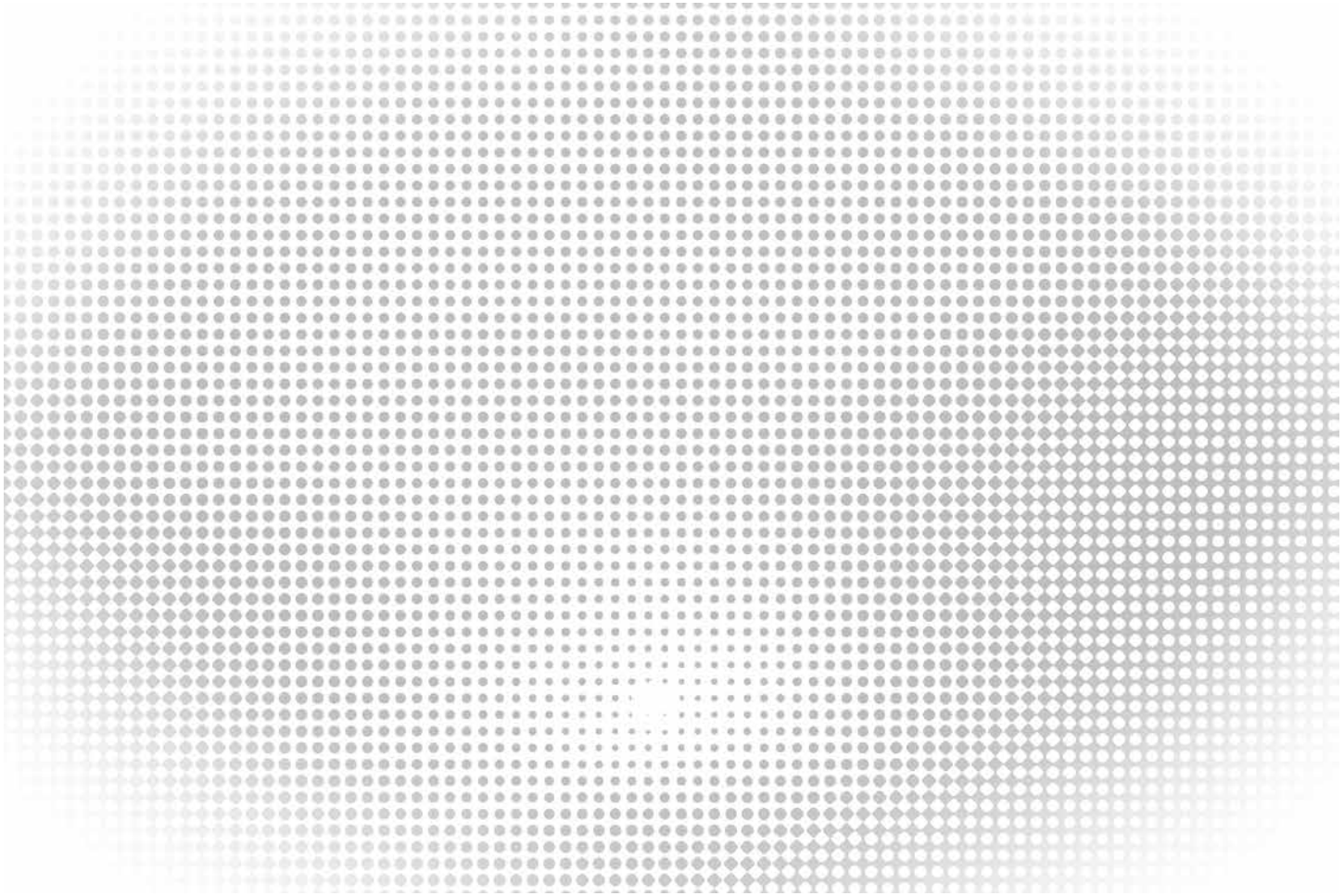


SHOT
Long

CAMERA
Low angle + low angle
facing the bridge

SOUND

SCREEN



SHOT

CAMERA

SOUND

SCREEN



SHOT

CAMERA

SOUND

Voice off:

The bridge was a grey metallic and reinforced concrete construction of 160 m long and 17 m wide,...

SCREEN We discover the bridge from 3 different viewpoints.

End with a 4th shot starting low angle in front of bridge, then vertical upward movement, finishing on top-down view, including Dragon's head hill next to the bridge.

Archives: picture of the bridge in 1965.

SHOT
Close-up to medium

CAMERA
Low angle: close-up (central pier) ,
angle from right side of the bridge
+ From low-angle to top-down



SOUND
"...resting on a central massive concrete pier, and on concrete abutments at each extremity...
To the Americans, it was the layout of the bridge that looked like a dragon's jaw.

SCREEN



SHOT

CAMERA

SOUND

SCREEN



SHOT

CAMERA

SOUND

SCREEN



SHOT

CAMERA

SOUND

SCREEN
Archives:
The bridge
and the French colonial
era; the reconstruction
of the bridge
and inauguration
by Uncle Ho.



<http://carlesvinyas.wordpress.com/tag/ho-chi-minh/>



<http://www.vietstamp.net/en/postage-stamp-of-vietnam/postage-stamps-of-the-democratic-republic-of-vietnam/1964/ham-rong-bridge/>



SHOT
Extreme long

CAMERA
Sliding and zooming from South to North

SOUND
“...Built by the French colonialists, Ham Rong bridge was sabotaged by the Viet Minh in 1945. From 1957, the Vietnamese started rebuilding it. It was inaugurated on the occasion of celebrating Ho Chi Minh’s birthday on May 19th, 1964.”

SCREEN Mr Lê Xuân Giang,
former political
commissar
in Ham Rong,
is giving
some explanation.



SHOT
Medium

CAMERA
Eye-level

SOUND

Lê Xuân Giang : "When the war expanded to the North, the demand for reinforcement sent to the south was greater so the role of the bridge was more important. Ham Rong allowed the passage of both ...

SCREEN Archives:
a train crossing
the bridge with soldiers
and supplies ;
on both sides
of the railway,
troops of the National
Liberation Front (VC),
trucks and bicycles
heavily loaded
with supplies.

<http://www.youtube.com/watch?v=SfR-3krS4iM>



SHOT
Medium

CAMERA
Sliding and zooming from South to North

SOUND
... road and rail traffic and was a vital link between
different regions / When the US army bombarded the North, they called...

SCREEN <http://www.youtube.com/watch?v=SfR-3krS4iM>



SHOT

CAMERA

SOUND

SCREEN <http://www.youtube.com/watch?v=SfR-3krS4iM>

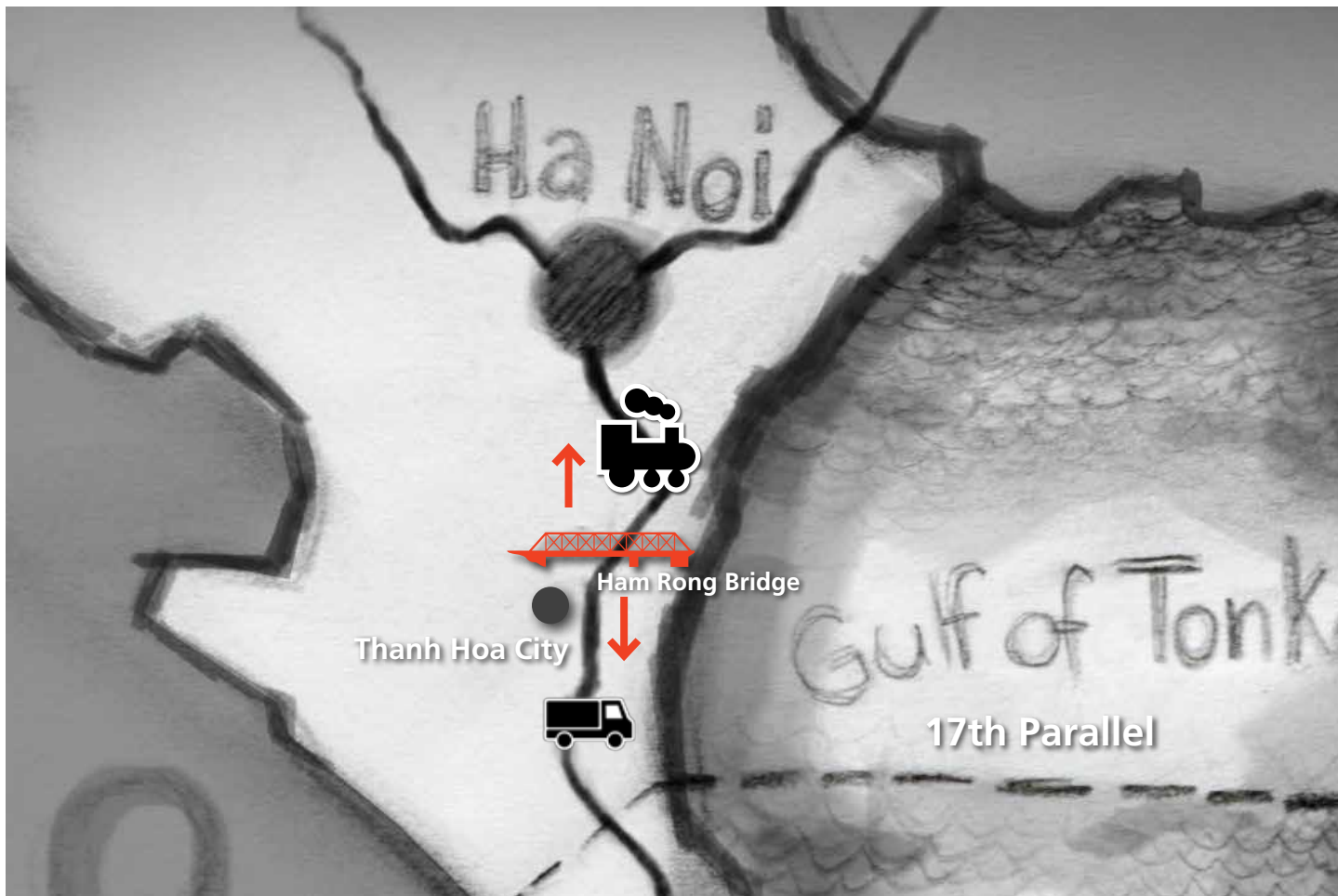


SHOT

CAMERA

SOUND

SCREEN
3 D animation:
map of North Vietnam,
using icons
and arrows,
we see the supplies
flowed in a torrent
through the bridge,
from North Vietnamese
factories and ports
to the Ho Chi Minh's trail
and to South Vietnam.



SHOT
Medium

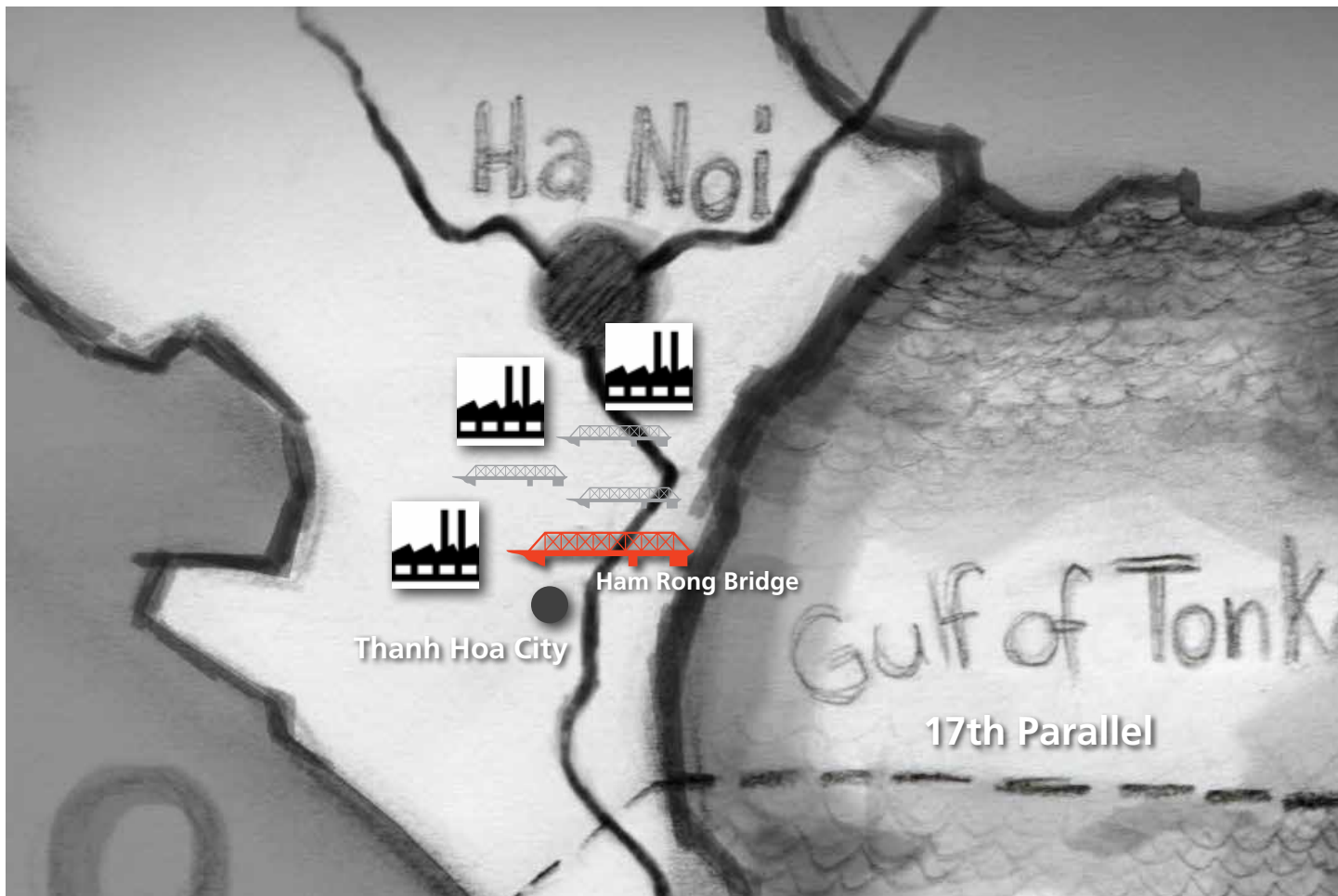
CAMERA
Top-down

SOUND

"...bridges breaking points and Ham Rong was the ideal breaking point..."

SCREEN
Mr Lê Xuân Giang continues his explanation.

Same map of scene n°10, with indication of the bridges (Ham Rong, Tao, Len, Ninh Binh, Na gu, Lang Thuong...) and breaking points in North Vietnam. The south limit of the map is 17th parallel and DMZ showing that Ham Rong is the last bridge.



SHOT
Medium
Medium

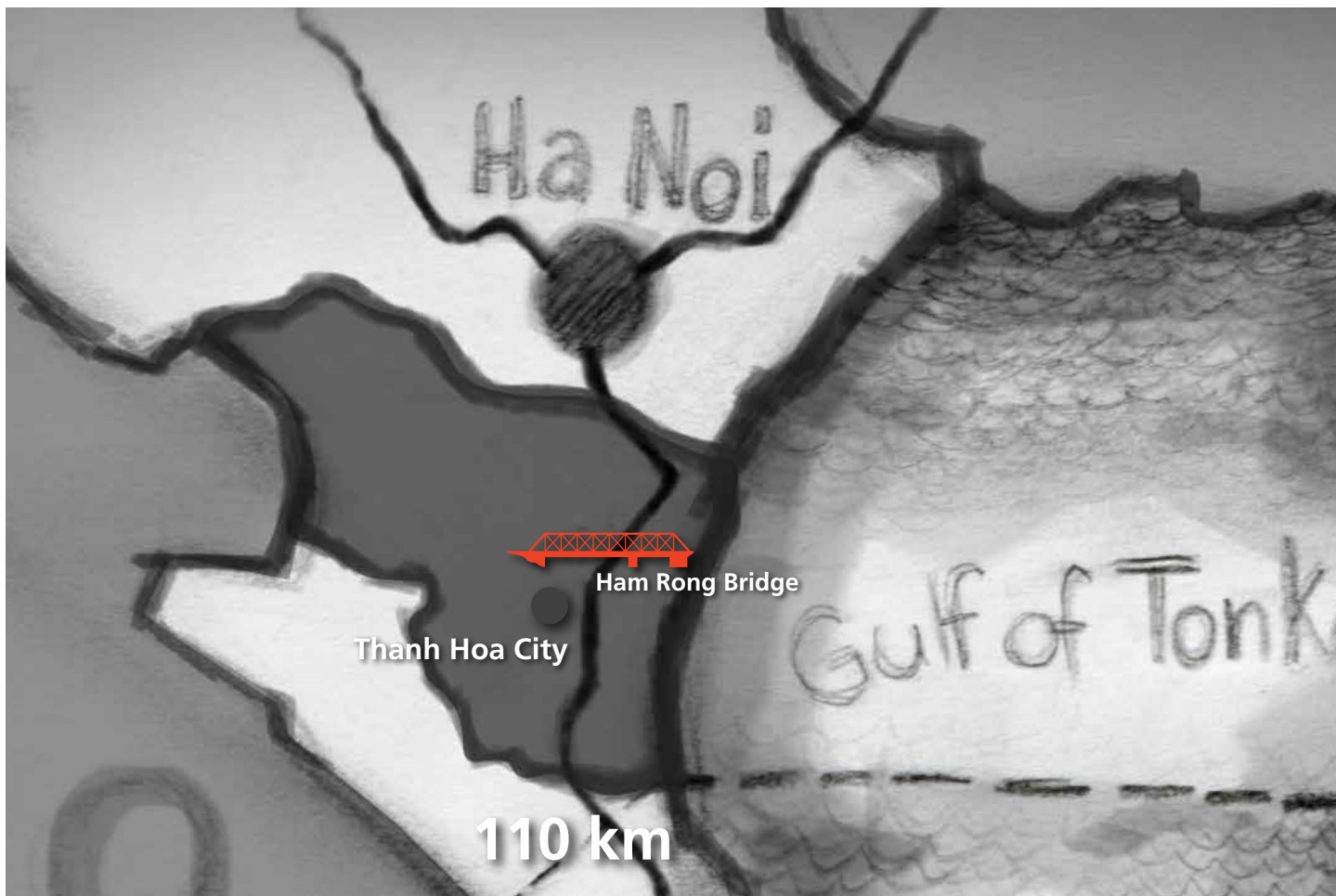
CAMERA
Eye-level (5 s)

Top-down, zooming on the area between Ham Rong bridge and 17th parallel (6 s)

SOUND

"..They counted about 99 breaking points in the North / This was the last bridge to the South / From Ham Rong bridge to the 17th Parallel there were no bridges"

SCREEN Map of South of North Vietnam (a bit smaller than map of scene 11), focusing on the width of Thanh Hoa province (layout of the territory)...



SHOT
Medium to Long

CAMERA
Top-down Thanh Hoa province and zooming out, the full view of the North and neighboring countries

SOUND
Voice-off :
The Thanh Hoa province has a width of only 110 kms.
US fast-flying jets could be over Ham Rong within minutes of crossing into the coast, as well as Thailand and Laos borders. By the time the attackers were detected by the Vietnam People's Air Force and Air Defense Force, the intruders could be gone."

SCREEN Dissolve: the map is enlarged and includes Thailand, Laos and Gulf of Tonkin. Animation with icons and arrows of US aircraft coming from Thailand, Laos and Gulf of Tonkin flying in the direction of the Ham Rong bridge. They drop their bombs - explosions (icons) - and quickly go back to their base in Thailand and in the Gulf of Tonkin on US Navy carriers.



SHOT

CAMERA

SOUND

SCREEN
Sketches: insert
of 4 sketches of US
aircraft flying over
Ham Rong area,
bombing the bridge
and leaving.



SHOT

CAMERA

SOUND

SCREEN



SHOT

CAMERA

SOUND